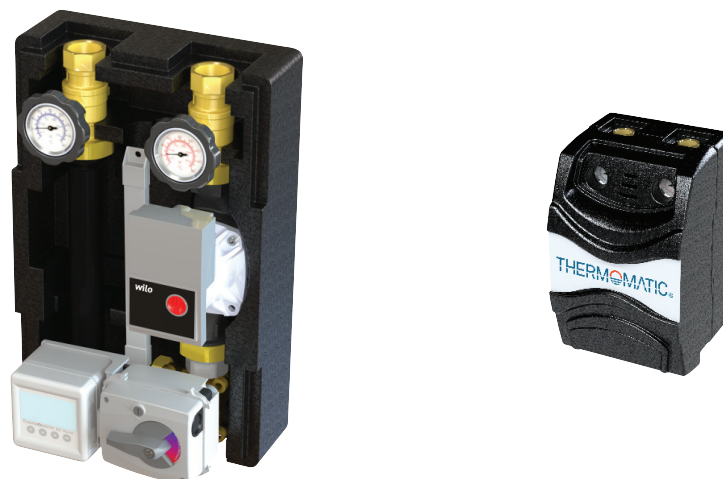


THERMOMATIC® 125

Distribution group for control of heating or cooling systems.



Thermomatic 125 is a range of complete distribution groups with the mixing operation for both heating and cooling applications. The range is based on our reliable mixing valves and our renowned Thermomatic range.

- The distribution groups are optimised to meet the system's energy needs safely and perfectly, thanks to the available actuator options.
- The insulation's ventilation function protects the device from condensation during cooling applications.
- The highly efficient energy-saving pump, together with dense insulation, provides an energy-efficient distribution group.
- Simple and tidy installation thanks to its standard installation dimensions.
- Wall bracket included as standard.
- When installing more than one distribution group the manifold makes a neat and easy installation.

Technical data DN25

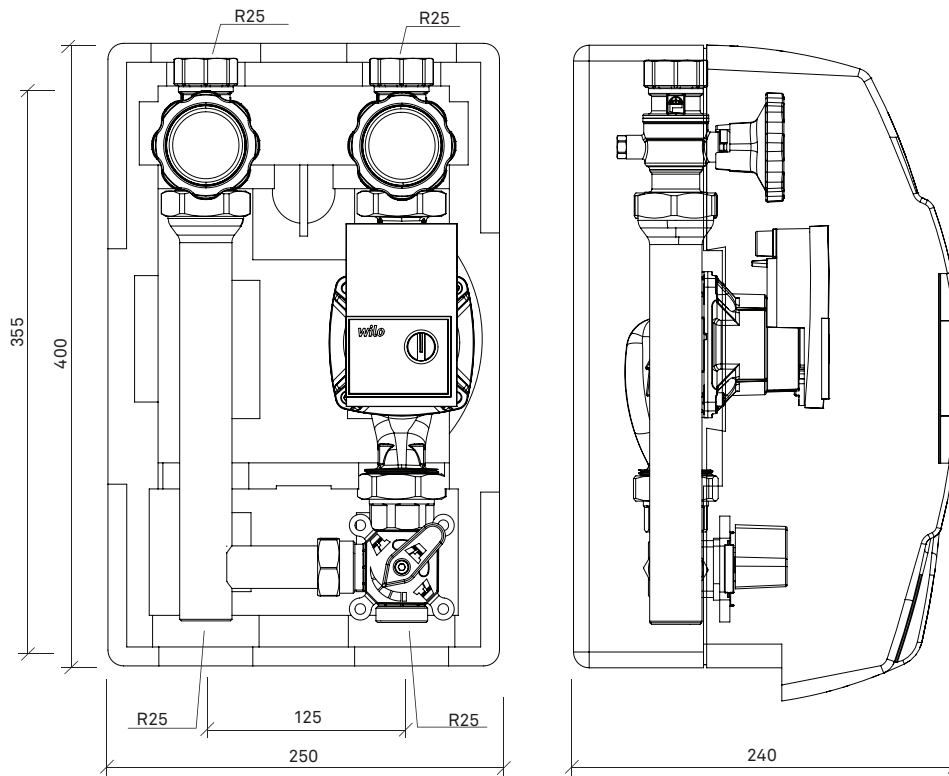
Actuator:	Without actuator Thermomatic TVM Thermomatic CC Thermomatic EC Home Thermomatic EC Home WL
Pump:	6 m, 180 mm
Connections:	R25
Kvs value:	6,0 alt 10,0

Technical data DN32

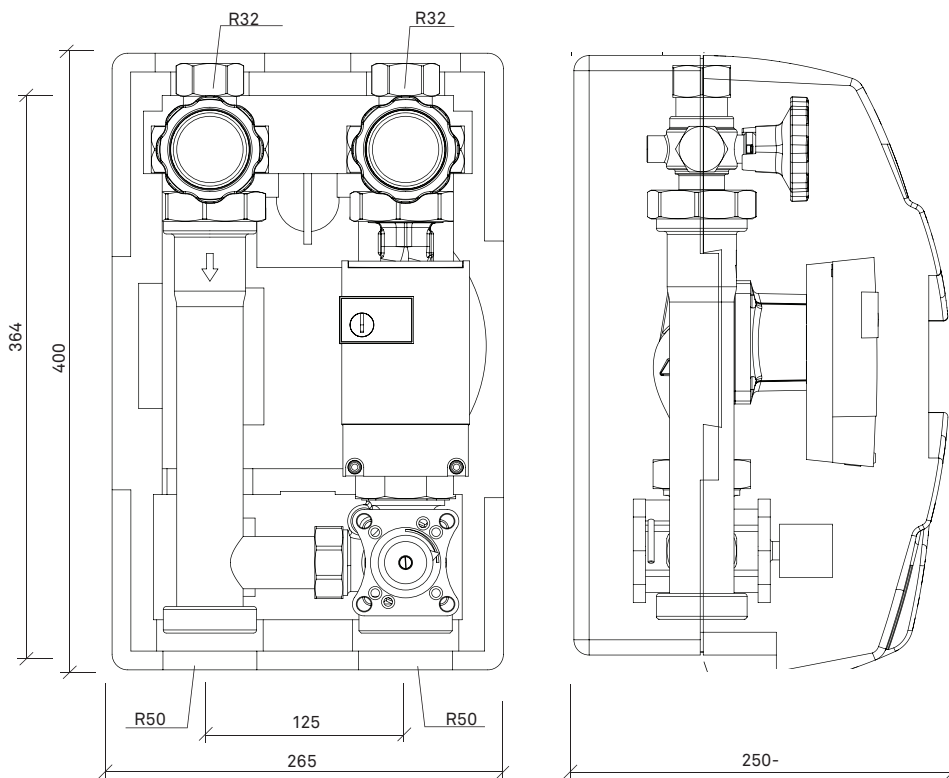
Actuator:	Without actuator Thermomatic TVM Thermomatic CC Thermomatic EC Home Thermomatic EC Home WL
Pump:	7,5 m, 180 mm 10 m, 180 mm
Connections:	R32
Kvs value:	17,0

Dimensions and connections

DN25



DN32



Accessories

See separate brochure.